

Operating instructions

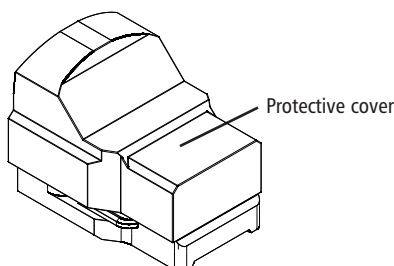
For optimal performance and to prevent damage to this precision device, please read the instructions carefully.

CHARACTERISTICS

Multi-coated lens. Six visible intensity levels and two levels for night vision.
 Compact size and low weight. Wide field of vision.

PROTECTIVE COVER

Remove the cover to use or adjust the device. NOTE: Placing the cover does not turn off the device.



BATTERY PLACEMENT

- . To install or replace the battery, gently remove the battery tray from the red dot body.
- . Install the new battery with the positive (+) side facing up.
- . Push the battery tray back until it is integrated into the body of the device.

ON/OFF AND INTENSITY LEVELS

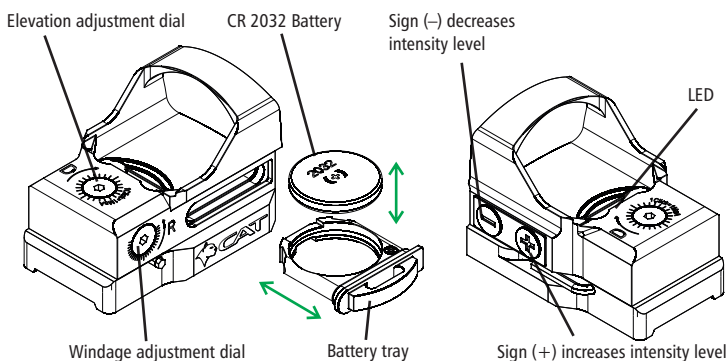
- . To turn on the device, quickly press the sign (+) or the (-).
- . To turn off the device, press the sign (+) or the (-) for four seconds.
- . The device automatically shuts down in three hours.
- . To increase the intensity level, press the sign (+).
- . To decrease the intensity level, press the (-) sign.

ELEVATION AND WINDAGE ADJUSTMENTS

The device has two separate controls for windage and elevation adjustments located on the top and right side of the device.

Turn the screws one way or the other using the adjusting tool supplied.

The windage adjustment mechanism has limit points at both ends and each advance click is equal to 1 MOA.



MAINTENANCE

- . The device will require very little routine maintenance other than cleaning the outer lens periodically with the supplied cloth.
- . Be sure to remove any dust or sand that remains on the lens before cleaning the surface.
- . Using a small amount of water or rubbing alcohol can help remove the toughest stains.
- . Check that there are no metallic remains adhered to the magnet that could end up trapped between the device and the slide of the gun.

If the red dot does not illuminate, please check the following:

- . That the battery is correctly inserted. Make sure the sign (+) is up.
- . If the battery is already exhausted, please replace it with a new one.

WARRANTY

Register your warranty valid for 1 year for manufacturing defects by sending an email to info@cat-laser.com with the serial number of the device.

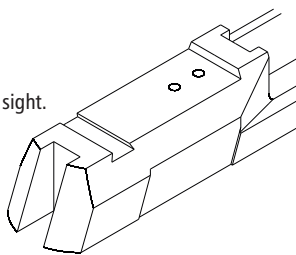
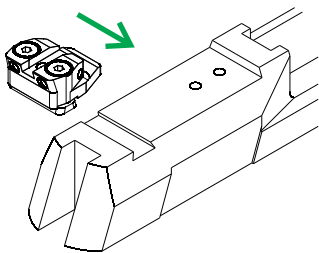
This warranty does not cover defects due to misuse of the product and will only be valid for the buyer who registers the warranty. N°

Assembly instructions

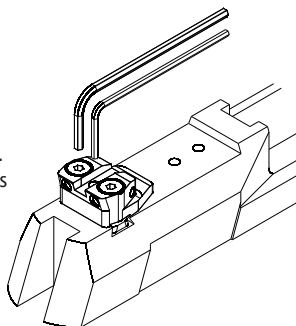
NOTES:

- A. The device has a very high-power magnet. Take the necessary precautions during installation against interaction with other ferrous materials, screws, tools, etc.
B. After each shooting session check the adjustment of the rear sight screws (tighten manually).

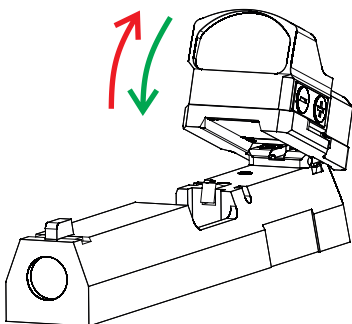
1. With the gun unloaded, remove the original rear sight.
If in doubt, please contact a gunsmith.



2. Loosen the screws without separating the parts and place the set in the housing as indicated in the diagram.

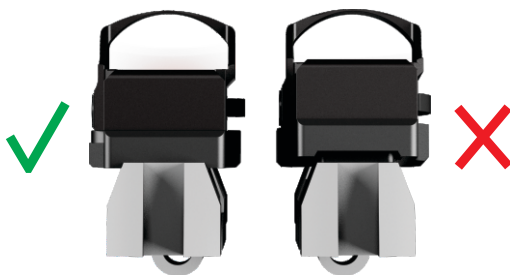


3. Set the windage assembly and progressively hand-tighten the screws with the supplied Allen key. **Do not over tighten.** It is advisable to fix the screws with an adhesive intended for this purpose. The recommended tightening order is the side bolts first and the center bolt last.

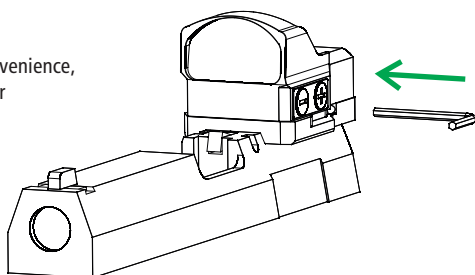


4. Position the device by supporting the rear of the rear sight and rotate downward to insert the rear sight into the device mount housing until the magnet contacts the top of the pistol slide.

5. To check its correct placement, look at the back of the weapon and verify that, once the device is installed, the rear sight is not visible and is completely hidden.



6. Optionally and for your convenience, you can place the Allen key for adjustment of windage and elevation in the housing located for this purpose on the side of the device, from left to right, which also provides extra fixation.



7. In case you want to remove the device from the gun, you must remove the safety allen key and rotate it in the direction of the red arrow in point 4.